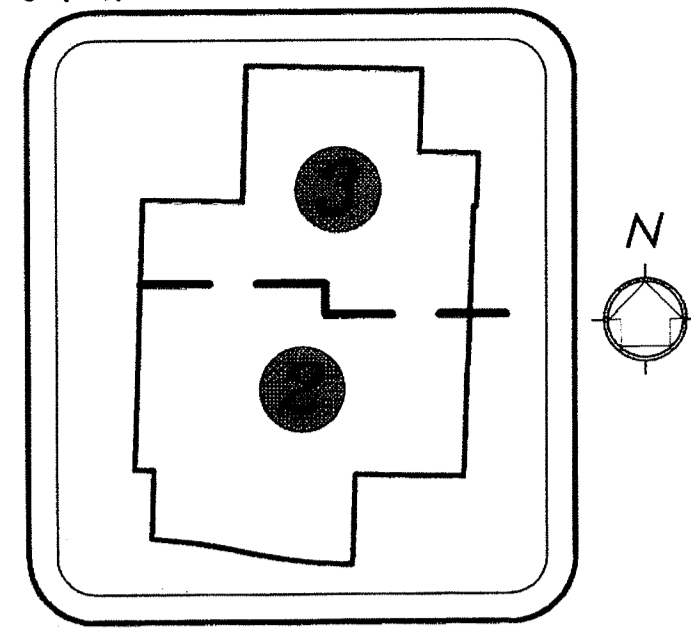


0492.009



KEY MAP
(NOT TO SCALE)

OXBRIDGE ACADEMY OF THE PALM BEACHES

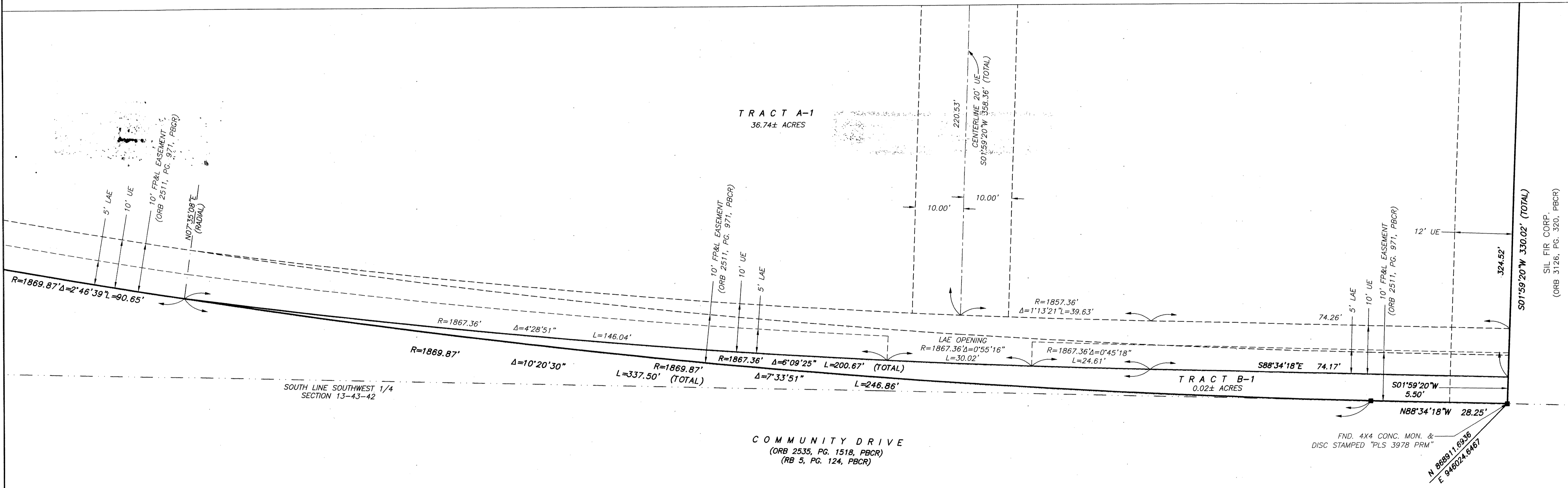
BEING A REPLAT OF JEWISH COMMUNITY CAMPUS, PLAT BOOK 68, PAGES 75 THROUGH 77, INCLUSIVE, AND MEYER JEWISH ACADEMY, PLAT BOOK 98, PAGES 58 THROUGH 59, INCLUSIVE, BOTH OF THE PUBLIC RECORDS OF PALM BEACH COUNTY, FLORIDA, SAID LANDS LYING AND SITUATE IN SECTION 13, TOWNSHIP 43 SOUTH, RANGE 42 EAST, PALM BEACH COUNTY, FLORIDA.

194

STATE OF FLORIDA }
COUNTY OF PALM BEACH } SS
THIS PLAT WAS FILED FOR
RECORD AT _____ M.
THIS _____ DAY OF _____
A.D. 2013 AND DULY RECORDED
IN PLAT BOOK _____ ON
PG.(S) _____ THROUGH _____
SHARON R. BOCK
CLERK AND COMPTROLLER
BY: _____
DEPUTY CLERK

SHEET 4 OF 4 SHEETS

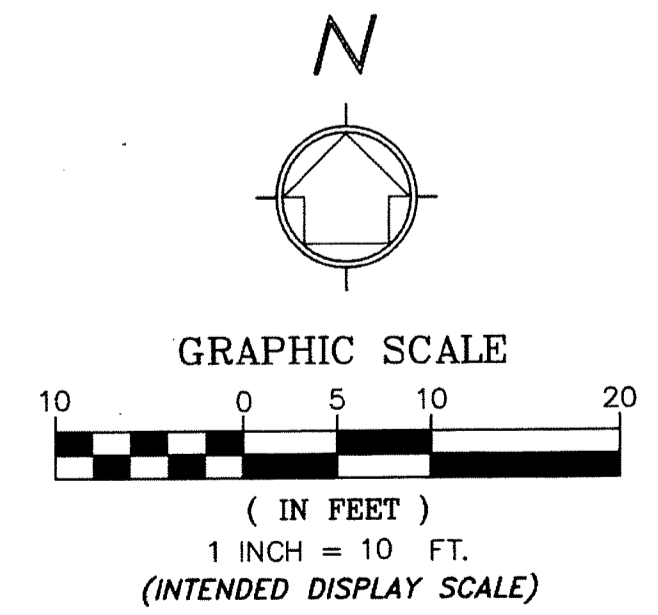
"DETAIL B"



LEGEND:

- | | | | |
|-------|------------------------------------|--------|---|
| ℄ | = CENTER LINE | PBCR | = PALM BEACH COUNTY RECORDS |
| CONC. | = CONCRETE | PBCWUD | = PALM BEACH COUNTY WATER UTILITY DEPARTMENT |
| CCR | = CERTIFIED CORNER RECORD | PLS | = PROFESSIONAL LAND SURVEYOR |
| DE | = DRAINAGE EASEMENT | PRM | = PERMANENT REFERENCE MONUMENT |
| DB | = DEED BOOK | PB | = PLAT BOOK |
| Δ | = DELTA (CENTRAL ANGLE) | R | = RADIUS |
| FP&L | = FLORIDA POWER & LIGHT | R/W | = RIGHT-OF-WAY |
| FND. | = FOUND | ■ | = SET 4"x4" CONC. PRM & ALUMINUM DISC
STAMPED "LB 7055" EXCEPT AS NOTED. |
| L | = LENGTH OF ARC | ① | = SHEET NUMBER |
| LAE | = LIMITED ACCESS EASEMENT | UE | = UTILITY EASEMENT |
| LB | = LICENSED SURVEYING BUSINESS | | |
| LME | = LAKE MAINTENANCE EASEMENT | | |
| LMAE | = LAKE MAINTENANCE ACCESS EASEMENT | | |
| MON. | = MONUMENT | | |
| ORB | = OFFICIAL RECORDS BOOK | | |
| RB | = ROAD PLAT BOOK | | |
| PG. | = PAGE | | |

NOTE:
THE DRAINAGE EASEMENTS, LIMITED ACCESS EASEMENTS, LAKE MAINTENANCE EASEMENT, LAKE MAINTENANCE ACCESS EASEMENT AND UTILITY EASEMENTS BEING REPLATED AND SHOWN HEREON WERE PREVIOUSLY CREATED BY JEWISH COMMUNITY CAMPUS, PLAT BOOK 68, PAGE 75, PALM BEACH COUNTY RECORDS. THE LIMITED ACCESS EASEMENT NORTH OF TRACT B-1 AND UTILITY EASEMENT NORTH OF TRACT B-1 EXTENDING ALONG THE SOUTH PLAT BOUNDARY ARE NEW.



WGI

Wantman Group, Inc.

Engineering ♦ Planning ♦ Surveying ♦ Environmental
2035 VISTA PARKWAY, SUITE 100, WEST PALM BEACH, FL 33411
(866) 909-2220 phone (561) 687-1110 fax
CERTIFICATE OF AUTHORIZATION No. LB 7055
ORLANDO - PORT ST. LUCIE - TAMPA
THIS INSTRUMENT WAS PREPARED BY DEREK G. ZEMAN, P.S.M.
PROFESSIONAL SURVEYOR AND MAPPER, LICENSE NO. 5655
FOR THE FIRM: WANTMAN GROUP, INC.